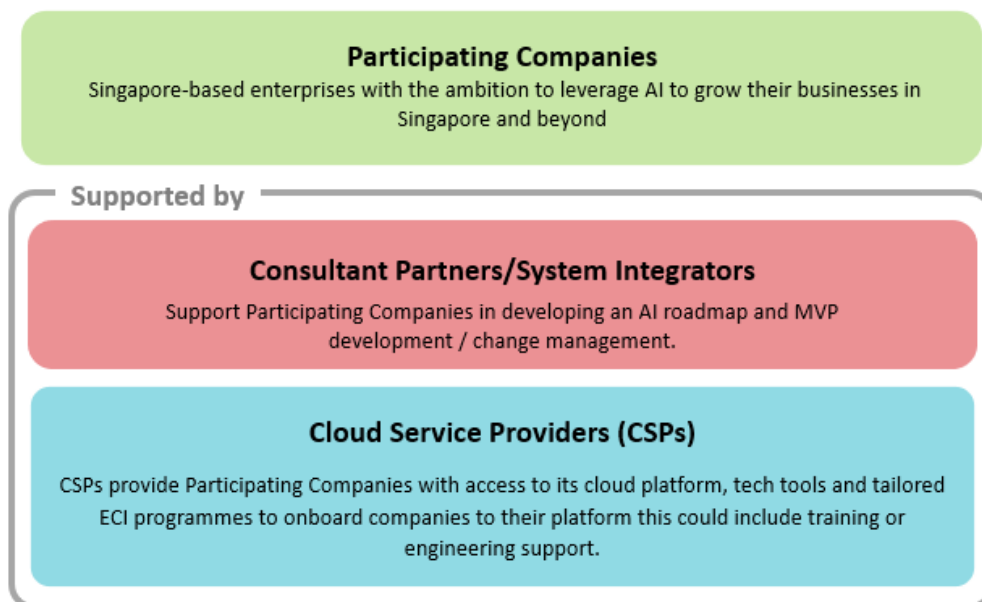


## Factsheet: Enterprise Compute initiative (ECI)

### 1. Structure of the ECI

At Budget 2025, MOF announced that it set aside up to \$150 million for the Enterprise Compute Initiative (ECI). The ECI is designed to support Singapore-based companies in advancing their AI transformation by availing (i) cloud credits and related tools and (ii) consultancy services. The desired outcomes are to develop a Minimum Viable Product (MVP) and eventual change management processes from use-cases submitted by the companies. The ECI is a short-term programme meant to catalyse the value creation of AI across the economy. It contributes to the broader goal stated in the National AI Strategy 2.0 (NAIS 2.0) of anchoring AI teams across Singapore.

Eligible companies will partner one of the major Cloud Service Providers (CSPs) such as Google, Microsoft and Amazon Web Services to access cutting-edge AI tools and cloud credits, training and certification. On behalf of the Government, DISG will administer the grants that support the cost of consultancy services contributing towards the development of MVP and eventual change management. These grants are awarded to Consultant Partners / System Integrators (Partners) who are familiar with the CSPs' tools and will serve as the providers of the consultancy services to companies.



Digital Industry Singapore (DISG)	DISG will administer the programme. This includes working with CSPs on tailoring their offerings, aligning with Partners on the scope of work needed, and assessing interested companies for acceptance into the programme.
Companies accepted into the ECI (Participating Companies)	<p>Participating companies will partner CSPs to access cutting-edge AI tools, cloud credits, and related training needed to develop a Minimum Viable Product (MVP).</p> <p>Companies will be supported by select Partners who are familiar with the CSPs' cloud platforms, with Government supporting part of the cost of consultancy services.</p>
Cloud Service Providers (CSPs)	<p>CSPs will provide companies with access to compute, its cloud platform, and tech tools. CSPs will also have tailored ECI programmes to onboard companies to their platform.</p> <p>CSPs will connect Participating Companies with their nominated Partners, who will provide guidance and consulting services throughout the programme.</p>
Consultant Partners / System Integrators (Partners)	Partners are nominated by CSPs for their expertise in the CSP's platform and in supporting customers. Partners will work with Participating Companies to develop an AI roadmap, outlining how to implement their use cases, optimise them in alignment with the broader goals of their organisation, and to support MVP development/change management.

## 2. Timeline

The programme will run one year from the launch date of the CSPs, with multiple cohorts launched by various CSPs on a rolling basis. Done well, these companies could gain the mandate to establish dedicated AI teams in Singapore.

## 3. Eligibility and Selection Process

Eligibility criteria: Companies registered or incorporated and are physically present in Singapore are eligible for this programme, subject to meeting the following criteria:

i. Baseline Criteria<sup>1</sup>

- a) A business entity registered or incorporated and is physically present in Singapore
- b) CEO or equivalent-level sponsorship
- c) Total organisation headcount based in Singapore should be at least 10 pax
- d) Software/AI & data capabilities: The organisation should have a tech team of at least two personnel. The Tech team can comprise roles such as software engineers, AI engineers, and/or data scientists.
- e) Organisation has experience in building a custom AI solution for a proof of concept and/or wider deployment.
- f) Organisation has accessible data sets to be worked on for the use case
- g) Financial ability to ensure project completion (e.g. stakeholder's equity etc.)

ii. Use Case Assessment<sup>2</sup>

- a) Type of use case: The proposed use case should focus on leveraging AI to achieve at least of one of the following objectives: (i) process improvement; (ii) new product development; (iii) research and development and/or (iv) contribution to the broader ecosystem.
- b) Impact: The proposed use case must demonstrate impact to the company and/or industry and lead to the establishment of AI team(s) within the company.

#### 4. Details of the Programme

Each Participating Company will receive support in the form of (i) cloud credits and related tools from CSPs and (ii) consultancy services from Partners aimed at developing a Minimum Viable Product (MVP) and eventual change management.

- i. **CSPs** will provide access to cloud credits, training, and AI tools. Details on the CSPs' offerings are found on the CSPs' websites and summarised below:

Google Cloud	Amazon Web Services	Microsoft
1. Google offers up to S\$200,000 worth of on-demand training licences to help companies and additional financial incentives to help companies create new AI-	1. AWS will provide a baseline of S\$350,000 in dedicated AI Springboard cloud credits and training. 2. AWS will offer support of up to S\$600,000 through complementary AWS	1. Support of up to S\$250,000 of Azure cloud credits, AI training and tools. 2. Microsoft will also offer funding of up to S\$700,000 in services to help select

<sup>1</sup> Companies will apply through their Corppass

<sup>2</sup> Applications will be assessed based on the impact of use case (business value, impact to ecosystem if applicable), as well as organisational and infrastructure readiness.

<p>driven solutions and services to boost their competitiveness.</p> <p>2. AI Workshops and enablement: 2-weeks Interactive technical workshops with Google Cloud and its partners on various aspects of AI.</p> <p>3. Upskilling and Certification on AI and GenAI.</p> <p>4. AI Showcase: An opportunity to showcase your AI roadmap and/or best practices and solutions to industry players and the public.</p>	<p>support programmes for qualifying companies. These include the AWS Migration Acceleration Program, which helps organisations offset the initial costs of moving workloads to the cloud, and AWS Lift, a program that provides technical and financial support to accelerate cloud adoption.</p>	<p>businesses co-develop their agentic AI roadmap with Microsoft technology partners, subject to approval.</p>
--	--	--

- ii. **Partners** will deliver consulting services for AI strategy development, technical implementation, and process redesign/change management.
- iii. The total supportable consulting cost is capped at S\$150,000, with DISG supporting 70% of actual costs, capped at S\$105,000 per company. Participating Companies are required to pay the remaining 30% of the actual consulting cost.

## 5. Expectations of the Participating Companies

Participating Companies are expected to:

- i. Fully commit manpower and technical resources to this project for the full duration (approximately 6 months); and
- ii. Deliver on the outcomes which are the MVP and change management processes.

For companies that are able to progress quickly, it is possible to complete the programme earlier. Thereafter, if DISG assesses the company to be ready for broader and longer-term AI plans, DISG will have a separate discussion with the company on support options.

## 6. Application Process

Interested companies who assess that they meet the eligibility criteria may apply [here](https://www.disg.gov.sg/apply-here/):  
<https://www.disg.gov.sg/apply-here/>

### Step 1: Application

Interested companies may apply to the programme through the ECI website using Corppass. During the application process, companies can review the offerings from each CSP and select their preferred CSP. The CSP selected at this stage is final and cannot be changed subsequently.

### Step 2: Acceptance

Applications will be reviewed by DISG. Successful applicants will receive an acceptance email confirming their participation. Upon acceptance of the award, the applicant's designated CSP will share comprehensive programme details and onboarding information, whilst also allocating a dedicated Partner to support the applicant.

### Step 3: Onboarding

The allocated Partner will introduce themselves to the company and provide a detailed overview of the programme timeline and subsequent steps. CSPs will provide access to cloud credits, training, and AI tools. Details on the support packages and cloud resources offered by each CSP can be found in paragraph 4.

## **7. Frequently Asked Questions (FAQ)**

### **A. Eligibility**

#### **1. Is the programme open to companies from all sectors?**

Yes. Companies from all sectors (except for companies in the gambling and betting industry) may apply for the programme, provided they meet the eligibility criteria.

#### **2. How will my application be assessed?**

Applications will be assessed based on the company meeting the baseline criteria, and the potential impact of the proposed use case to the company and the broader industry.

#### **3. Am I eligible for ECI if I am currently or have received grants for AI-related projects?**

Yes, you are eligible if your company meets the criteria for ECI and the proposed use case is differentiated from the other projects that have received government support.

## B. Programme offerings

### 4. What consultancy services does the programme support?

This includes consultancy services aimed at developing an AI roadmap based on the submitted use-case, and eventual change management execution plans. The consultancy services rendered must go beyond strategy consulting and focus on technical implementations.

### 5. Which Cloud Service Providers can I choose from?

There are currently three participating Cloud Service Providers (CSPs) offering the ECI programme: Google Cloud, Microsoft and Amazon Web Services. Please refer to the CSPs' websites for the latest details on their cloud credit offerings and training programmes.

## C. Application

### 6. How and when can I apply for ECI?

Companies may apply for ECI through <https://www.disg.gov.sg/apply-here/>.

### 7. What is the processing time for applications? What milestones can I expect after application?

Applicants will generally be notified on their application status within 4 weeks. Successful applicants will also be notified of their assigned CSP, which will subsequently reach out with onboarding information, including programme milestones.

### 8. Is it mandatory to select a CSP that I am currently using?

No, you are free to select any CSP.

### 9. Can a parent entity have multiple subsidiaries as participants?

No. This is not allowed. We encourage the parent entity to join the programme to chart an AI transformation strategy for the entire company group.

### 10. My company has multiple use cases. Do I need to submit multiple applications?

No, please submit a single application with your main use case. Should the application be approved, your assigned CSP and Partner will be happy to discuss the different use cases you have in mind and advise on a prioritisation framework and implementation roadmap as needed.

### 11. My application was rejected previously. Can I try again?

Unsuccessful applicants are welcome to apply again with a revised or new project proposal. However, companies should ensure that there have been meaningful modifications since their previous submission.

**12. I have a preferred Partner which is not on the list of Partners. Can I still work with them?**

No, you will need to work with one of the Partners in the list. These Partners are selected based on their familiarity with the CSPs' cloud credits and tools. If your application is approved, your assigned CSP will get in touch with onboarding information including your assigned Partner.

**D. Deliverables and Expectations**

**13. What are the key deliverables expected from companies for each ECI project?**

Participating Companies can work with Partners to deliver two main outputs:

- An AI Roadmap that articulates key milestones and actions required by the companies for MVP creation, as well as any change management plans they need to implement in the next 12 months to ensure continuity of AI innovation beyond the programme. This may include an AI platform or architecture diagram where applicable
- A minimum viable product (MVP) based on the submitted use case. The MVP should be tested with minimally five end-users who must provide written feedback.

**E. Programme Participation/Implementation**

**14. What documents do Participating Companies need to submit for claims?**

Participating Companies do not need to submit any grant application forms or claim documents. The ECI grant is awarded directly to Partners, who assume full responsibility for making the claims.

**15. What is the payment arrangement for Participating Companies to make the 30% of consulting services?**

The Partner and Participating Company will establish payment arrangements through their commercial agreements.

**F. Others**

**16. What happens after the programme?**

The programme will equip Participating Companies with a roadmap for AI organisational transformation, which could involve change management processes within the company.

**17. I have completed my ECI project, can I apply again?**

Yes, Participating Companies are welcome to reapply after completion of their ECI project. The submission should be based on new use case.

If there are further queries, please contact [ECI\\_DISG@edb.gov.sg](mailto:ECI_DISG@edb.gov.sg).